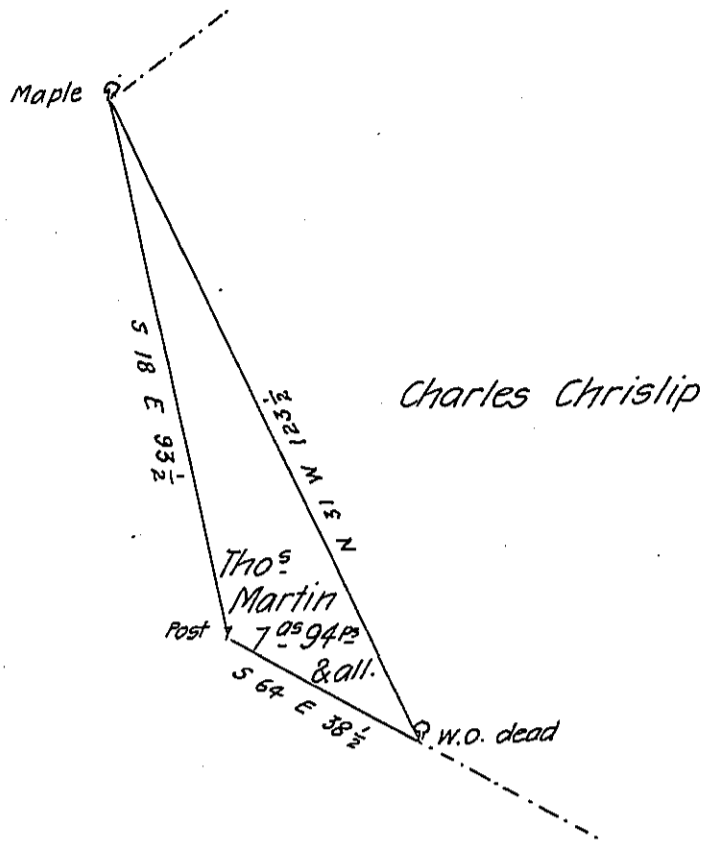


Land Late of
Tho^s Martin



The draught of a tract of Land situate in Mifflin Township
 Cumberland County Containing Seven acres & Ninety four Perches &
 allowan- of 6 P. Cent for Roads &c. Survey^d the 7th of Decemr. 1802 on
 a warrant granted to Tho^s Martin dated August 1st 1799

Wm Ramsey D.S.

To Sam^l Cochran Esquire
 Surveyor Gen^l of Pennsy.

IN TESTIMONY that the above is a copy of the original remaining on file in
 the Department of Internal Affairs of Pennsylvania, made
 conformably to an Act of Assembly approved the 16th day of
 February, 1833, I have hereunto set my Hand and caused
 the Seal of said Department to be affixed at Harrisburg,
 this eighth day of December 1905

Geo A Brown
 Secretary of Internal Affairs.